

Demonstrating integrated innovative technologies for an optimal and safe closed water cycle in Mediterranean tourist facilities www.demeaumed.eu



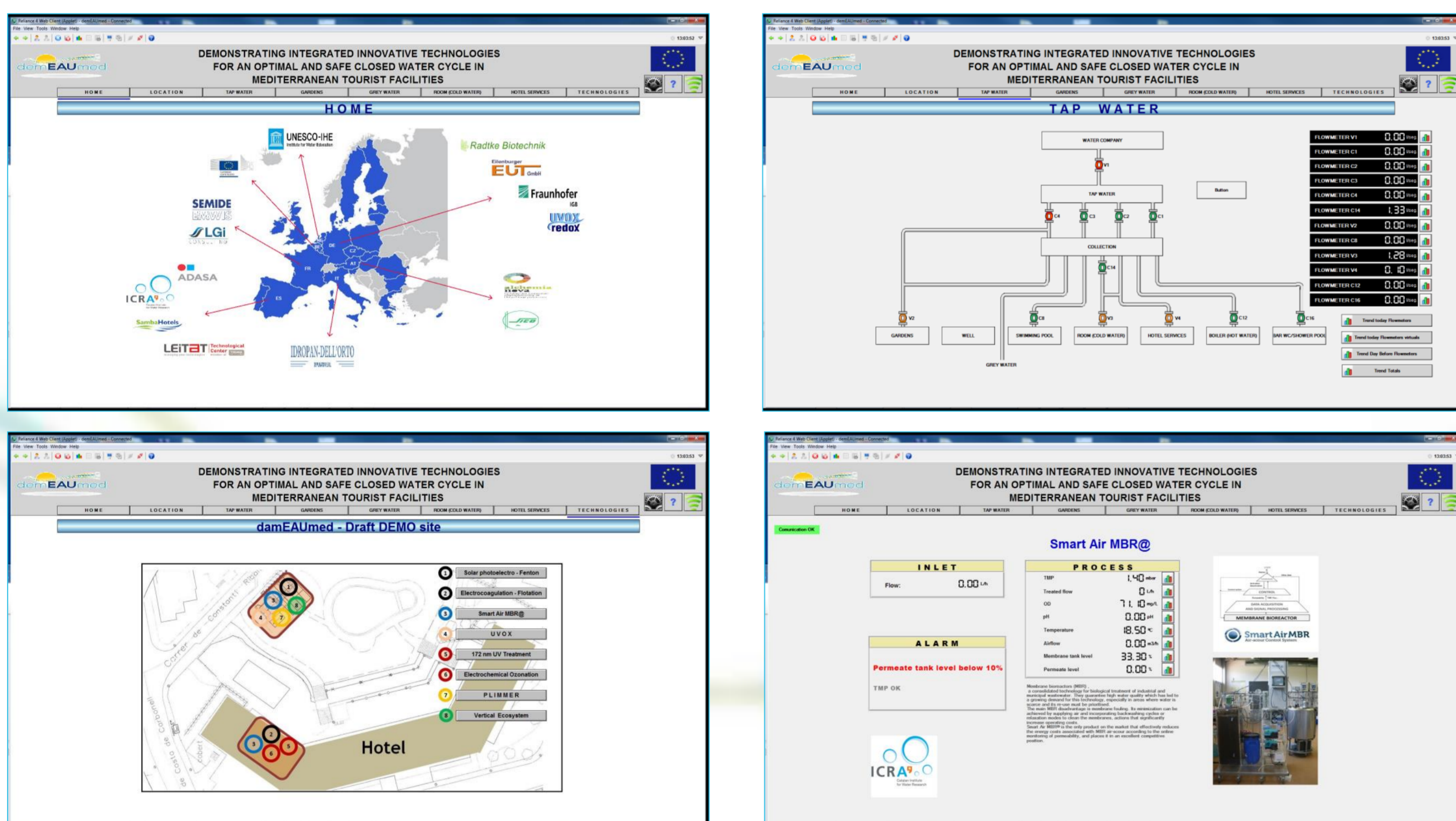
MONITORING AND CONTROL TOOL

ADASA, adasa@adasasistemas.com

Description

The monitoring and control tool of demEAUmed is the platform that shows, controls, generates alarms and records the information of the different water values thought the hotel.

Users can connect remotely visualized the information in real time, and can control, display and acknowledge current alarms, and display historical data and alarms, trends and reports.



Applicability

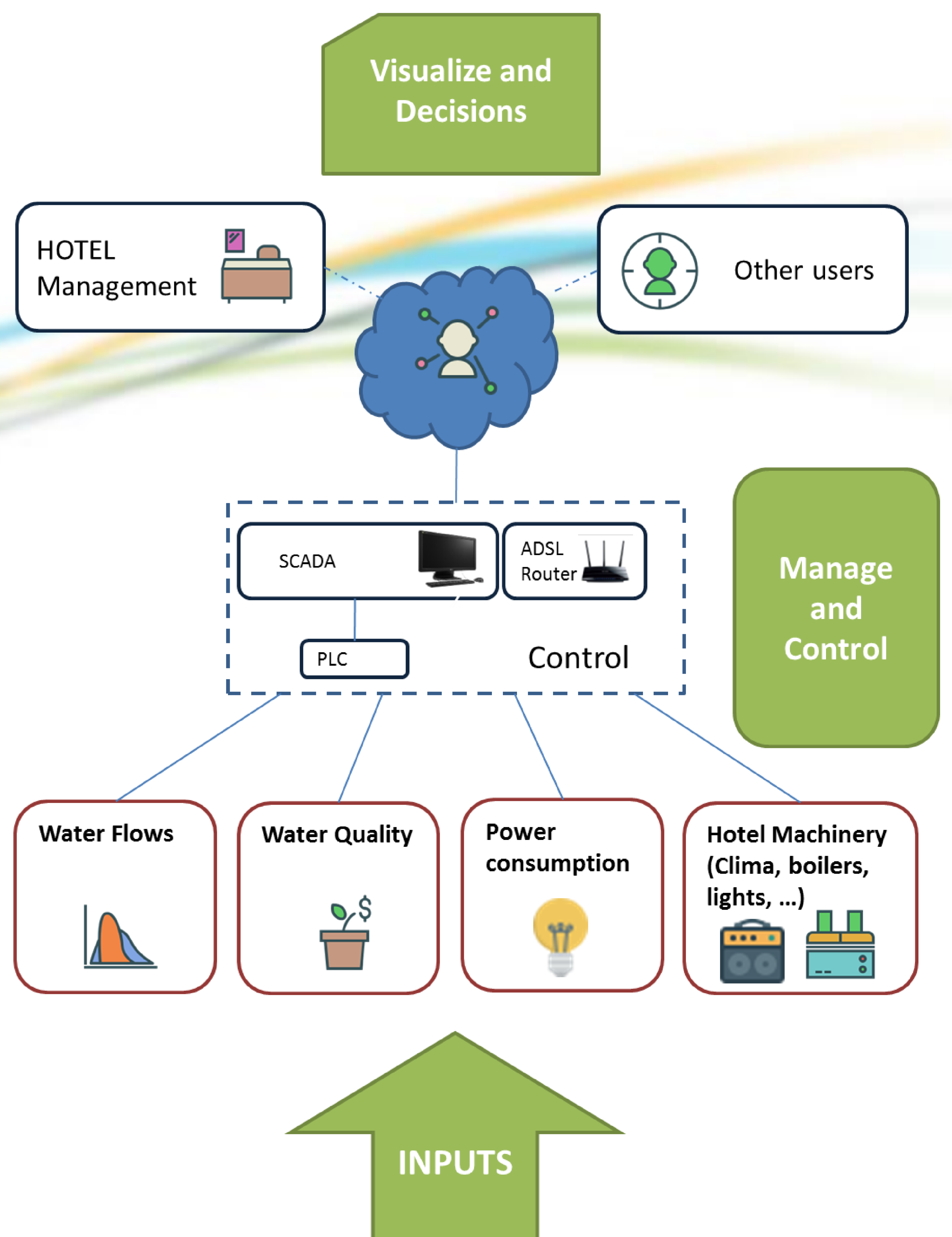
The tool is applicable in facilities that consume large amounts of water - as in the tourism sector - and in other sectors such as urban use in small and remote communities dealing with water shortages and commercial buildings market in specific water stressed areas.

Monitoring control tool can be used to improve the efficient management of water thanks to the knowledge, in real time, of the different flows, quality and amounts of water. Also can help to improve and manage other resources as room/areas temperature, electrical consumption, machine information (pumps pressure, flow, boilers temperature, ...)



Innovation Factor

- Introducing Big Data in Resorts & Hotel Management to improve efficiency and reduce cost
- The use of industrial application for water management in hotels providing information about water quality and consumptions



www.demeaumed.eu



“This project has received funding from the European Union’s Seventh Programme for research, technological development and demonstration under grant agreement N° 619116. The contents of this material are the sole responsibility of demEAUmed Consortium and can in no way be taken to reflect the views of the European Union.”